



MONTHLY MEMBERSHIP PROGRESS REPORT

District 2 S4

Results as of: 4/30/2015

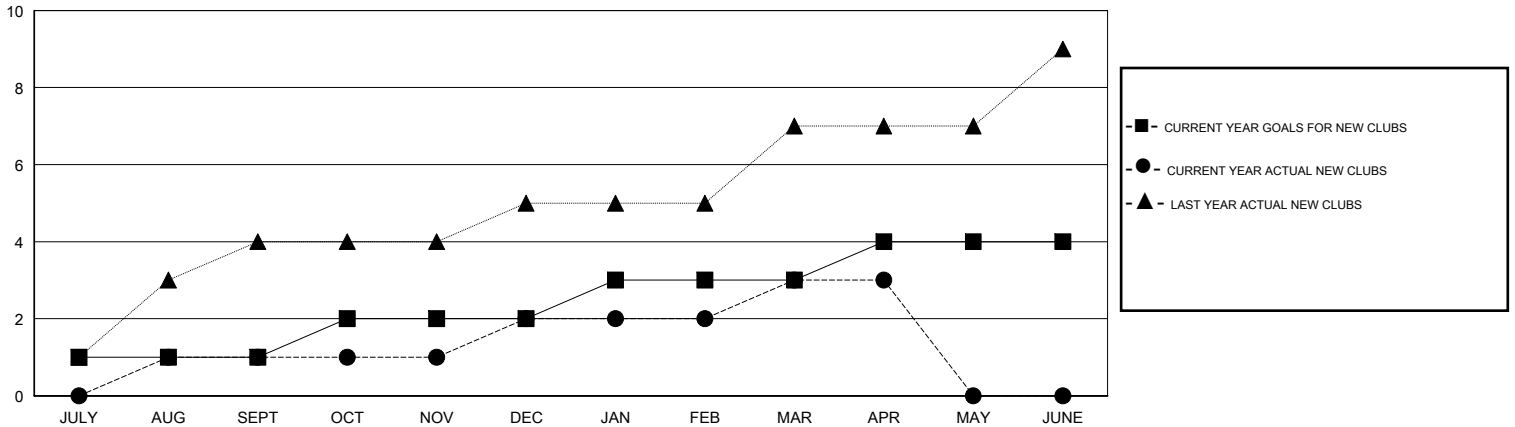
GMT: HAL GRIFFIN

LOCATION TEXAS

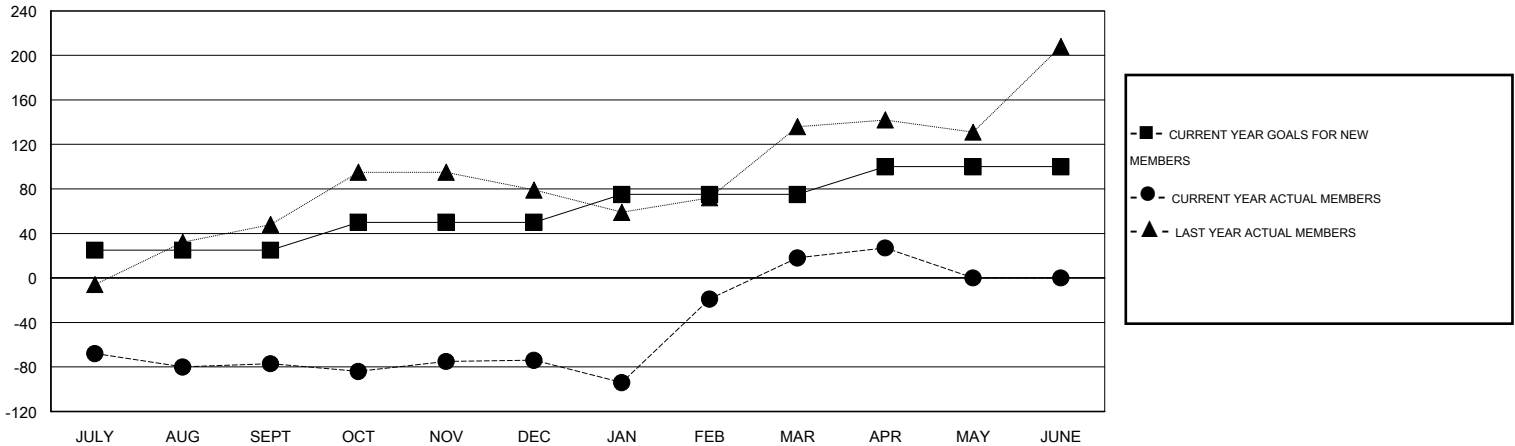
GMT CA 1

Clubs					Members				
RESULTS FOR 2014-2015					RESULTS FOR 2014-2015				
QUARTER	NEW CLUB GOAL	NEW CLUBS	DROPPED CLUBS	NET GAIN/LOSS	QUARTER	NEW MEMBER GOAL	CHARTER AND NEW MEMBERS ADDED	DROPPED MEMBERS	NET GAIN/LOSS
JULY/AUG/SEPT	1	1	1	0	JULY/AUG/SEPT	25	116	193	-77
OCT/NOV/DEC	1	1	0	1	OCT/NOV/DEC	25	112	109	3
JAN/FEB/MAR	1	1	0	1	JAN/FEB/MAR	25	179	87	92
APR/MAY/JUNE	1	0	0	0	APR/MAY/JUNE	25	34	25	9

GOALS AND ACTUAL NEW CLUBS CUMULATIVE



GOALS AND ACTUAL MEMBERS CUMULATIVE



DROPPED CLUBS: 1	60 CLUBS OF 86 ADDED 1 OR MORE NEW MEMBERS	<u>GENDER DISTRIBUTION</u>	
		MALE	1,532 (59.89%)
<u>DROPPED MEMBERS</u>		FEMALE	1,026 (40.11%)
DECEASED	18	CLICK HERE FOR HEALTH ASSESSMENT DATA	
CLUB CANCELLED	0		
OTHER	396		
TOTAL	414	FAMILY UNIT MEMBERS	451
		HEAD OF HOUSEHOLD	222
		NON-HEAD OF HOUSEHOLD	229